



PARTS CATALOGUE

EF1000iS (7CG3) AUSTRALIA



1S7CG-700E1

()

EF1000iS
PARTS CATALOGUE
©2019 by Yamaha Motor Co., Ltd.
1st edition, June 2019
All rights reserved.
Any reprinting or unauthorized use
without the written permission of
Yamaha Motor Co., Ltd.
is expressly prohibited.
Printed in Japan.

FOREWORD

This Parts Catalogue is related to the parts for the model(s) on the cover page. When you are ordering replacement parts, please refer to this Parts Catalogue and quote both part numbers and part names correctly.

1. Modifications or additions which have been made after the issue of the Parts Catalogue will be announced in the Parts News.
It is advisable that you make the necessary corrections to the Parts Catalogue according to the Parts News.
2. Abbreviations
The following abbreviations are used in this Parts Catalogue.
“UR” Use specified parts number.
“UN” Use as many as needed.
“AP” Alternate Parts
“LM” Locally Made (Parts need to be ordered locally)
“F#” Frame No. (Applicable machine No.)
“O/S” Over Size
3. The number of components for assembly
 - Parts, which are to be supplied in an assembly, are listed with a dot (.) in front of the part name as shown below.
 - The numeral appearing to the right of each component part indicates the quantity of parts for each assembly unit.

PART NO.	DESCRIPTION	Q'TY	REMARKS
2F5-83310-60	FRONT FLASHER LIGHT ASSY	2	
115-83311-60	.BULB (6V-18W)	1	

4. Applicable colours of graphics are represented in the “REMARKS” as shown below.

PART NO.	DESCRIPTION	Q'TY	REMARKS
2N4-24110-00-X5	FUEL TANK COMP.	2	MXR
3J1-24240-10	.GRAPHIC, FUEL TANK	1	FOR MXR

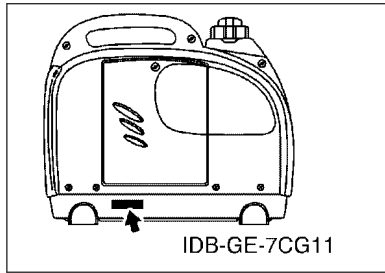
5. Note that the illustrations for reference in finding parts numbers are not to be used for assembling. When assembling, please use the applicable service manual.

6. The asterisk (*) before a reference number indicates modified items after the first edition.

FOREWORD

7. Applicable Serial No.

Frame Serial No.



8. Applicable Colour Code (The (*) mark shows Model colour.)

Abbreviation	Colour Name	Colour Code
PBS3(*)	PURPLISH BLUE SOLID 3	0714

9. Applicable Starting Serial No.

*****Serial NO.

Model	Model Code	Destination	Voltage	Serial NO.
EF1000iS	7CG3	AUSTRALIA	230V-50Hz	7CG-4350101

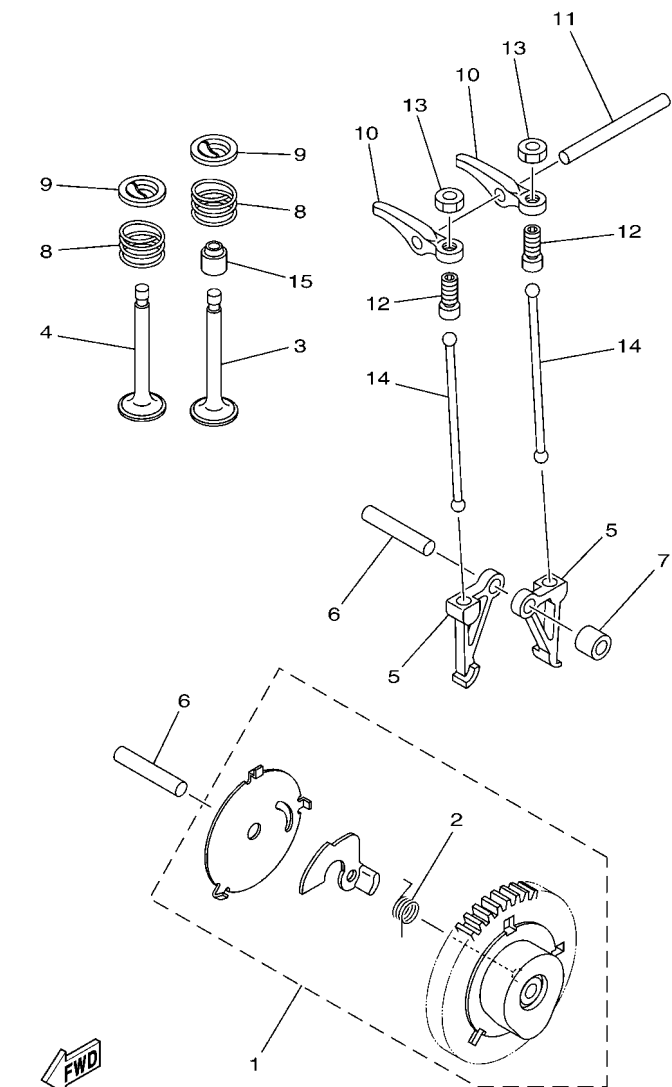
CONTENTS

CYLINDER.....	1
CRANKSHAFT & PISTON.....	2
CAMSHAFT & VALVE.....	3
AIR SHROUD & STARTER.....	4
INTAKE.....	6
CARBURETOR.....	7
EXHAUST.....	9
CRANKCASE.....	10
FRAME.....	11
FRAME 2.....	12
FUEL TANK.....	13
MAGNETO.....	15
GENERATOR.....	16
CONTROL BOX.....	17
GRAPHIC & EMBLEM.....	19

INDEX

NUMERICAL INDEX.....	20
----------------------	----

FIG. 3 CAMSHAFT & VALVE



7VV1010-A031

REF. NO.	PART NO.	DESCRIPTION	7CG3				REMARKS
1	7VV-12170-02	CAMSHAFT ASSY 1	1				
2	7VV-12287-01	.SPRING, DECOMPRESSION	1				
3	7CG-12111-00	VALVE, INTAKE	1				
4	7CG-12121-01	VALVE, EXHAUST	1				
5	7CG-12141-C0	FOLLOWER,CAM	2				
6	93605-30002	PIN, DOWEL	2				
7	90387-05624	COLLAR	1				
8	90501-16708	SPRING, COMPRESSION	2				
9	7VV-12117-00	RETAINER, VALVE SPRING	2				
10	7VV-12151-00	ARM, VALVE ROCKER	2				
11	93604-42002	PIN, DOWEL	1				
12	7VV-12159-00	SCREW, VALVE ADJUSTING	2				
13	90170-05302	NUT	2				
14	7VV-12154-00	ROD, VALVE PUSH	2				
15	1HX-12119-00	SEAL, VALVE STEM	1				

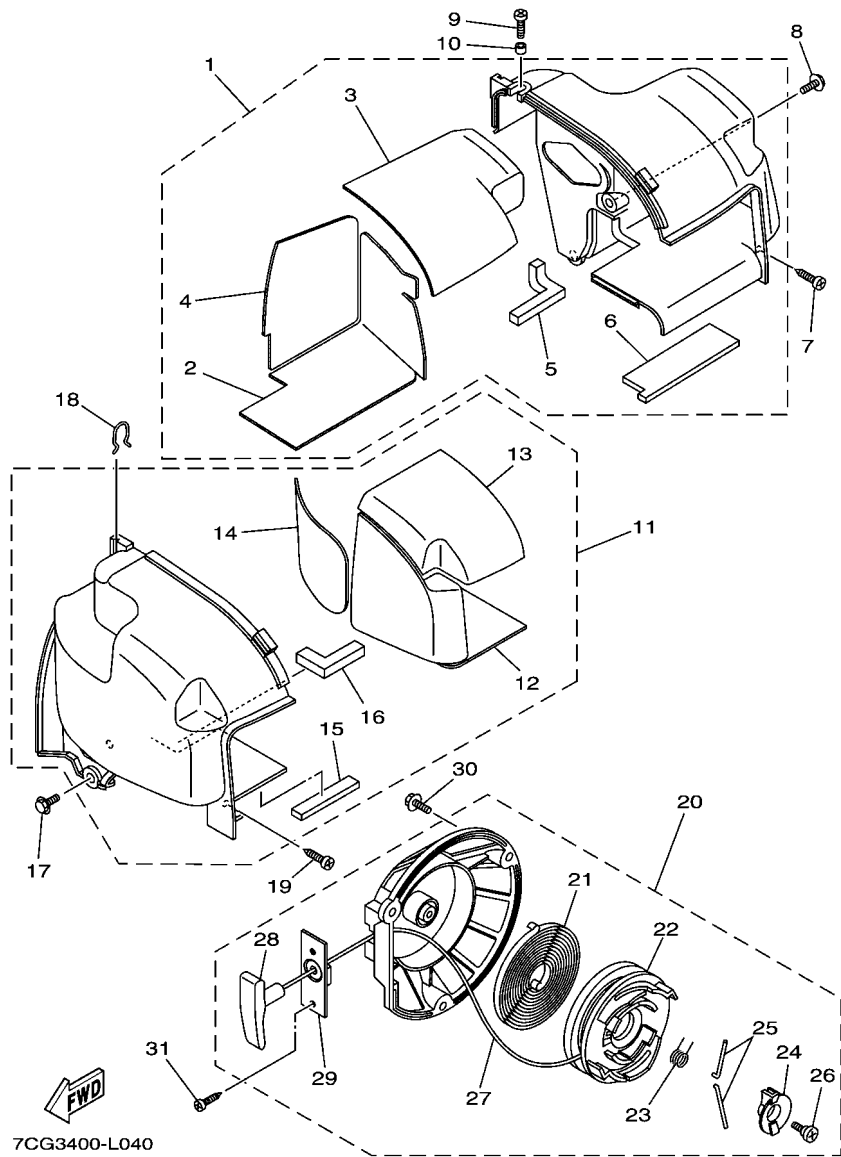


FIG. 4 AIR SHROUD & STARTER

REF. NO.	PART NO.	DESCRIPTION	7CG3				REMARKS
1	7VV-12620-00	AIR SHROUD ASSY	1				
2	7VV-1469A-00	.FIBER	1				
3	7VV-1469E-00	.FIBER	1				
4	7VV-1469F-00	.FIBER 3	1				
5	7VV-12668-00	.DAMPER, AIR SHROUD 3	1				
6	7VV-12678-00	.DAMPER, AIR SHROUD 5	1				
7	97707-50016	SCREW, TRUSS HEAD TAPPING	1				
8	90105-05002	BOLT, FLANGE	2				
9	98907-05014	SCREW, BIND	1				
10	90387-05679	COLLAR	1				
11	7VV-12650-00	AIR SHROUD ASSY.,2	1				
12	7VV-1478A-00	.FIBER 7	1				
13	7VV-1478E-00	.FIBER 8	1				
14	7VV-1478F-00	.FIBER 9	1				
15	7VV-12679-00	.DAMPER, SHROUD 6	1				
16	7VV-12669-00	.DAMPER, AIR SHROUD 4	1				
17	90105-05002	BOLT, FLANGE	2				
18	7VV-12486-00	CLIP	2				
19	97707-50016	SCREW, TRUSS HEAD TAPPING	1				
20	7VV-15710-00	STARTER ASSY	1				
21	7VV-15713-00	.SPRING, STARTER	1				
22	7VV-15714-00	.DRUM, SHEAVE	1				
23	7VV-15715-00	.SPRING, FRICTION	1				
24	7VV-15716-00	.PLATE, DRIVE	1				
25	7VV-15741-00	.PAWL, DRIVE	2				
26	7VV-15793-00	.SCREW	1				
27	7VV-15751-00	.WIRE, STARTER	1				

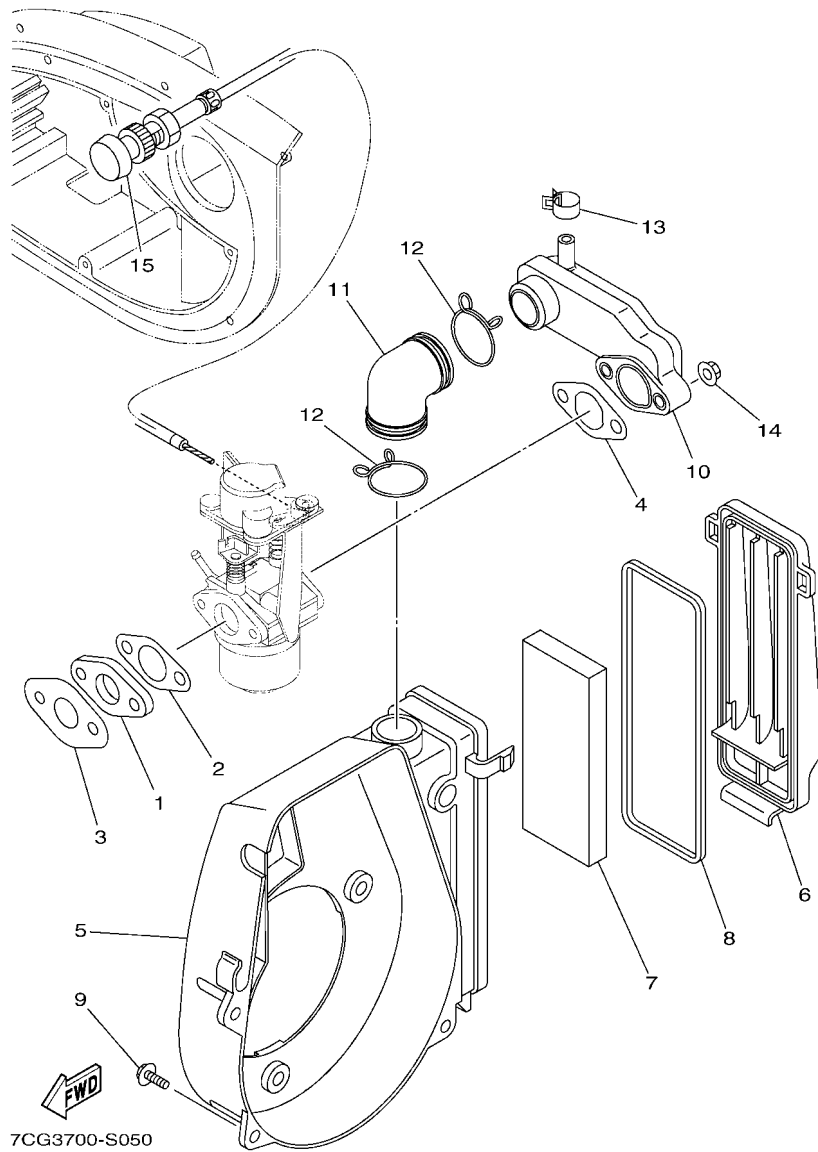
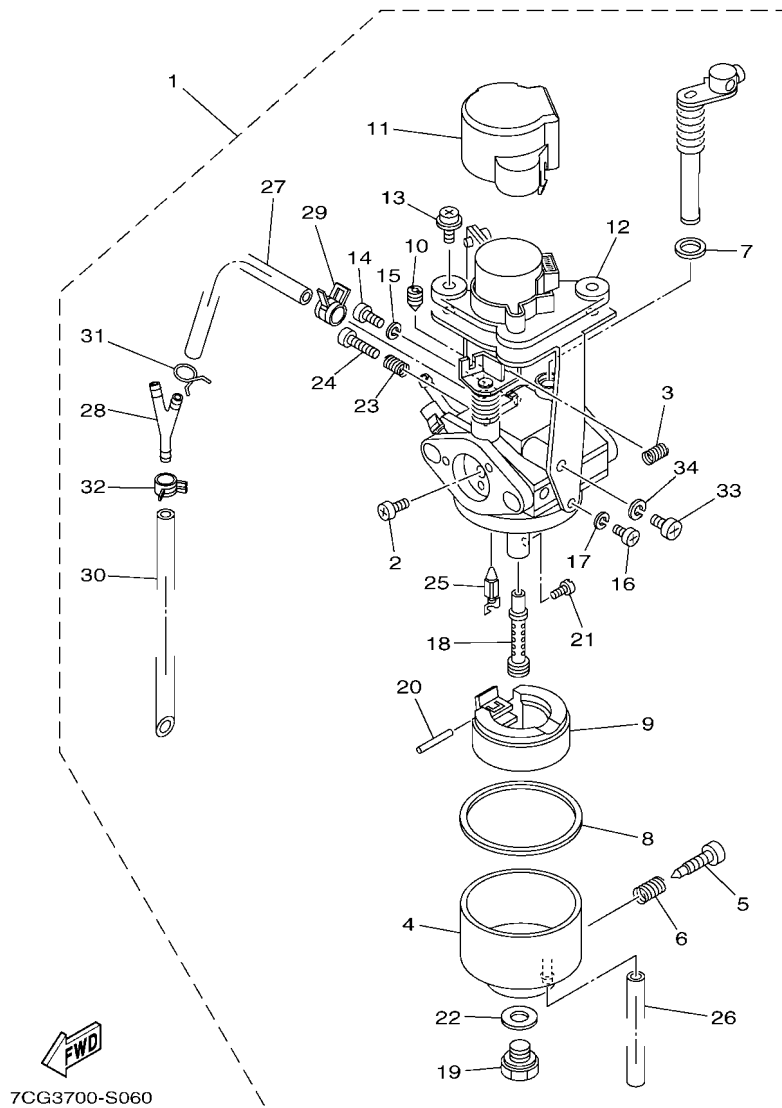


FIG. 5 INTAKE

REF. NO.	PART NO.	DESCRIPTION	7CG3				REMARKS
1	7X9-13595-00	JOINT	1				
2	7G5-13556-10	GASKET, MANIFOLD	1				
3	7VV-13556-00	GASKET, MANIFOLD	1				
4	7X9-14416-10	GASKET, AIR CLEANER	1				
5	7VV-14411-00	CASE, AIR CLEANER 1	1				
6	7VV-14412-00	CAP, CLEANER CASE 1	1				
7	7VV-14451-00	ELEMENT, AIR CLEANER	1				
8	7VV-14462-00	SEAL	1				
9	90105-05002	BOLT, FLANGE	3				
10	7VV-14453-00	JOINT, AIR CLEANER 1	1				
11	7VV-14485-01	PIPE, JOINT	1				
12	90467-280A0	CLIP	2				
13	90467-13064	CLIP	1				
14	95707-06500	NUT, FLANGE	2				
15	7VV-26331-00	CABLE, CHOKE	1				

FIG. 6 CARBURETOR

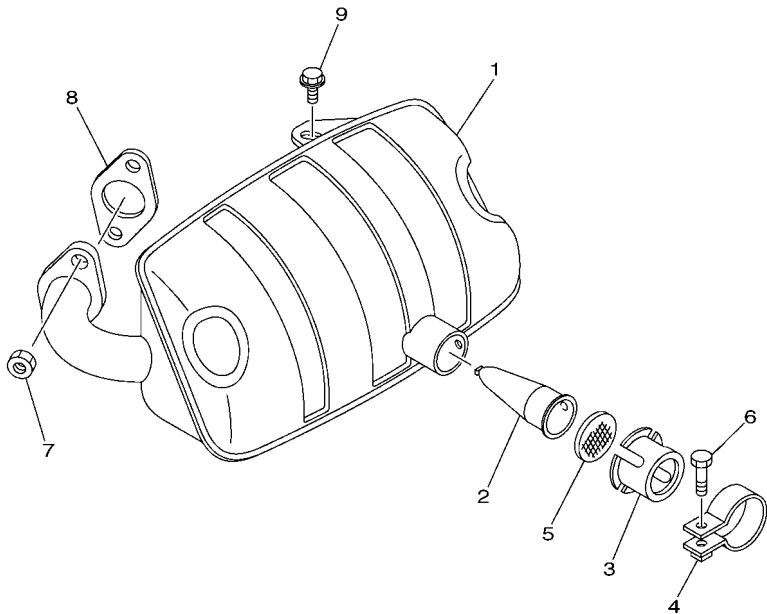


7CG3700-S060

REF. NO.	PART NO.	DESCRIPTION	7CG3				REMARKS
1	7CG-14101-02	CARBURETOR ASSY 1	1				
2	7RH-14486-00	.SCREW, ROD	3				
3	127-14134-00	.SPRING, AIR ADJUSTING	1				
4	7CG-14181-00	.BODY, FLOAT CHAMBER 1	1				
5	7E1-14191-00	..PLUG, DRAIN	1				
6	73A-14212-00	..SPRING	1				
7	22F-14117-00	.WASHER, PLUG SCREW	1				
8	7CY-E4997-00	.SEAL	1				
9	7X9-14185-00	.FLOAT	1				
10	620-14142-32-A0	..JET, PILOT (# 32.5)	1				
11	7VU-14293-00	.COVER 1	1				
12	7CF-81802-09	.MOTOR UNIT ASSY.	1				
13	4SV-24453-00	.SCREW	2				
14	98507-05008	.SCREW, PAN HEAD	1				
15	92990-05100	.WASHER, SPRING	1				
16	98580-04010	.SCREW, PAN HEAD	1				
17	92990-04100	.WASHER, SPRING	1				
18	7VV-1495E-2C	.NOZZLE, MAIN	1				
19	7CG-14162-00	.BOLT, HOLDING	1				
20	22F-14186-00	.PIN, FLOAT	1				
21	1HX-1423E-23-A0	..JET, MAIN (# 58.8)	1				
22	127-14198-00	.GASKET	1				
23	73A-14212-00	.SPRING	1				
24	1WG-14922-00	.SCREW, THROTTLE	1				
25	7VV-14150-00	.NEEDLE ASSY	1				
26	1V3-14196-00	.PIPE, OVER FLOW 1	1				
27	7VV-14197-00	.PIPE	1				

FIG. 7 EXHAUST

REF. NO.	PART NO.	DESCRIPTION	7CG3				REMARKS
1	7CG-14721-10	MUFFLER 2	1				
2	7VV-14786-00	ARRESTER, SPARK	1				
3	7NJ-14799-01	CAP	1				
4	7NJ-14788-00	BAND, SILENCER	1				
5	7NJ-1479E-00	NET, WIRE 2	1				
6	90153-05024	SCREW, HEXAGON	1				
7	95307-06600	NUT	2				
8	7VV-14613-00	GASKET, EXHAUST PIPE	1				
9	95827-06012	BOLT, FLANGE	1				



7CG3700-S070

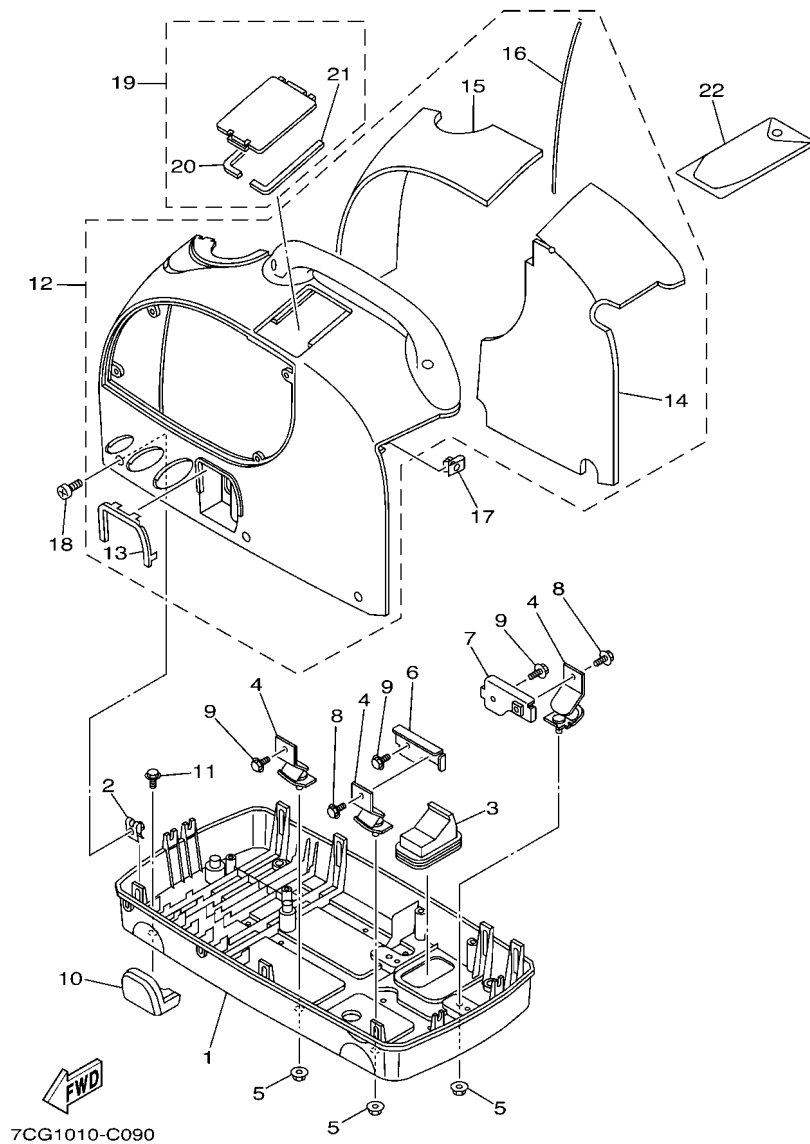
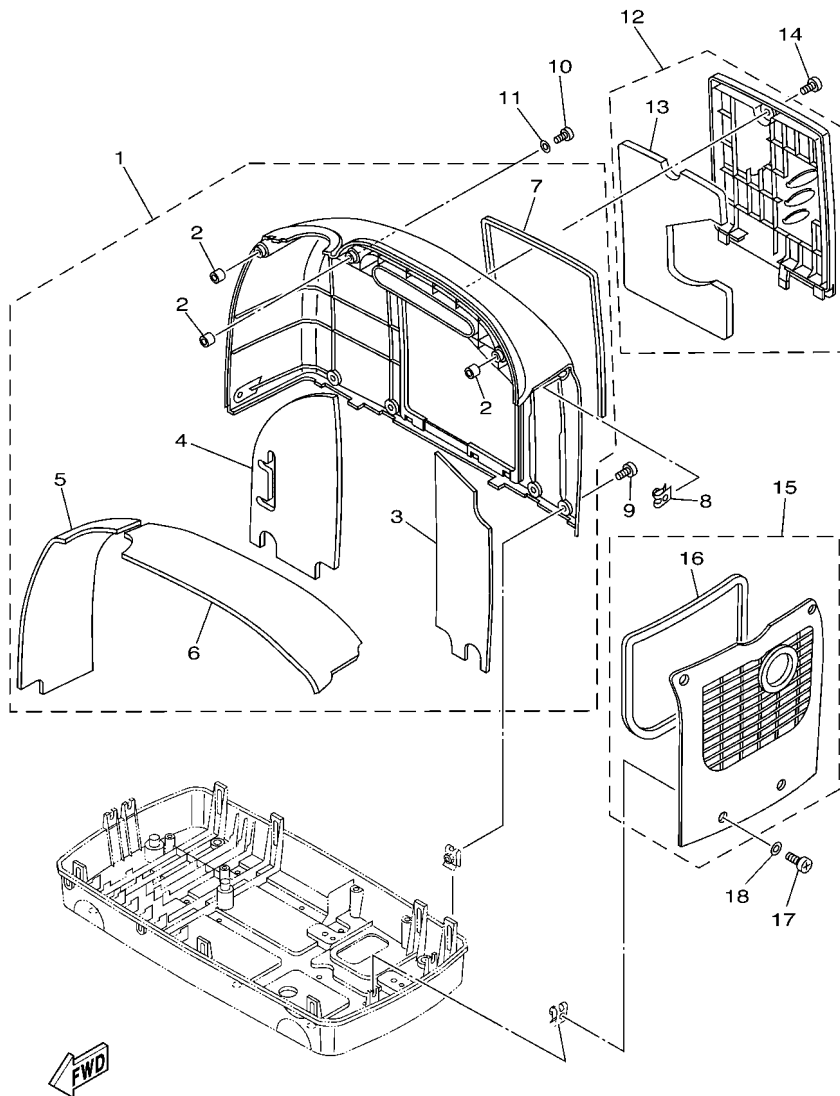


FIG. 9 FRAME

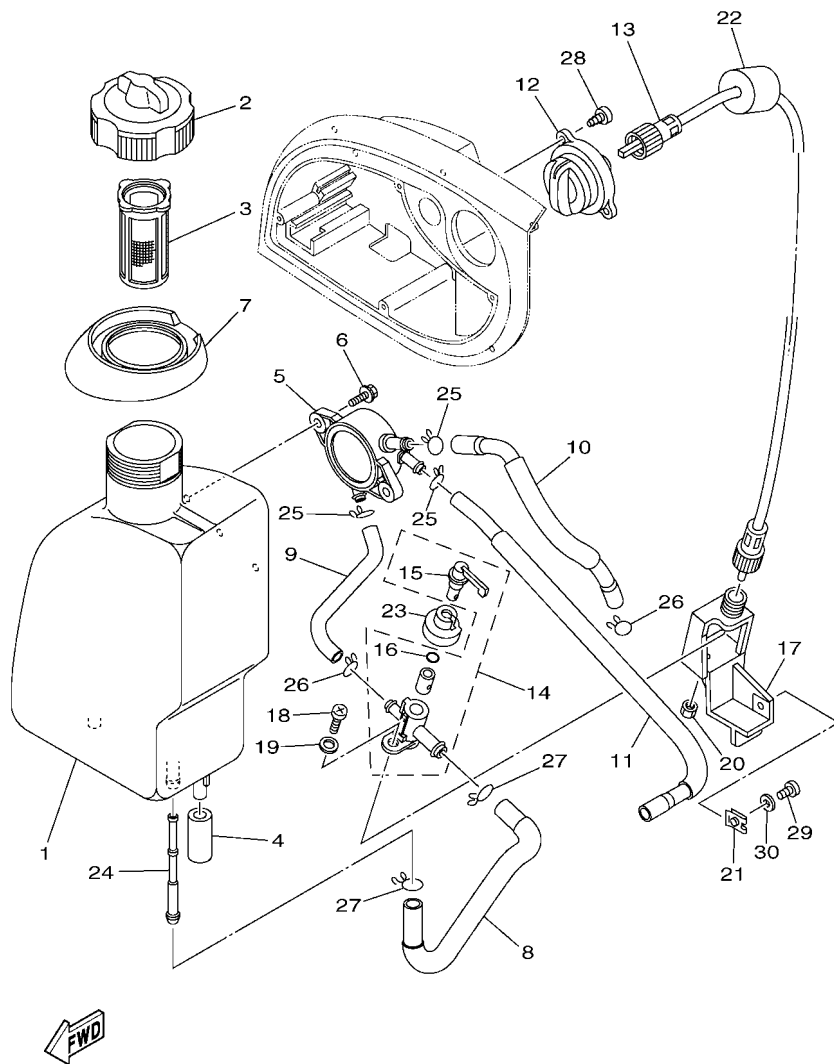
REF. NO.	PART NO.	DESCRIPTION	7CG3				REMARKS
1	7CG-22881-01	BASE, MOUNTING	1				
2	90183-05076	NUT, SPRING	11				
3	7VV-67617-00	JOINT, DRAIN	1				
4	7CG-22891-D0	INSULATOR, MOUNTING	4				
5	95707-06500	NUT, FLANGE	4				
6	7CG-11011-00	BRACKET, ENGINE 1	1				
7	7CG-11012-00	BRACKET, ENGINE 2	1				
8	95817-06008	BOLT, FLANGE	2				
9	95817-06012	BOLT, FLANGE	4				
10	7VV-22895-00	INSULATOR, MOUNTING	4				
11	90105-05002	BOLT, FLANGE	4				
12	7CG-228A0-00	COVER ASSY 1	1				
13	7VV-22825-01	.PROTECTOR 1	1				
14	7CG-22875-00	.SEAL 3	1				
15	7CG-22876-00	.SEAL 4	1				
16	7VV-23383-00	.COVER, DUST SEAL 1	1				
17	90183-05061	NUT, SPRING	1				
18	7CG-23119-00	SCREW	4				
19	7VV-228C0-00	COVER ASSY 3	1				
20	7VV-22886-00	.SEAL 9	1				
21	7VV-22887-00	.SEAL 10	1				
22	7VV-28100-00	TOOL KIT	1				



7CG1010-C100

FIG. 10 FRAME 2

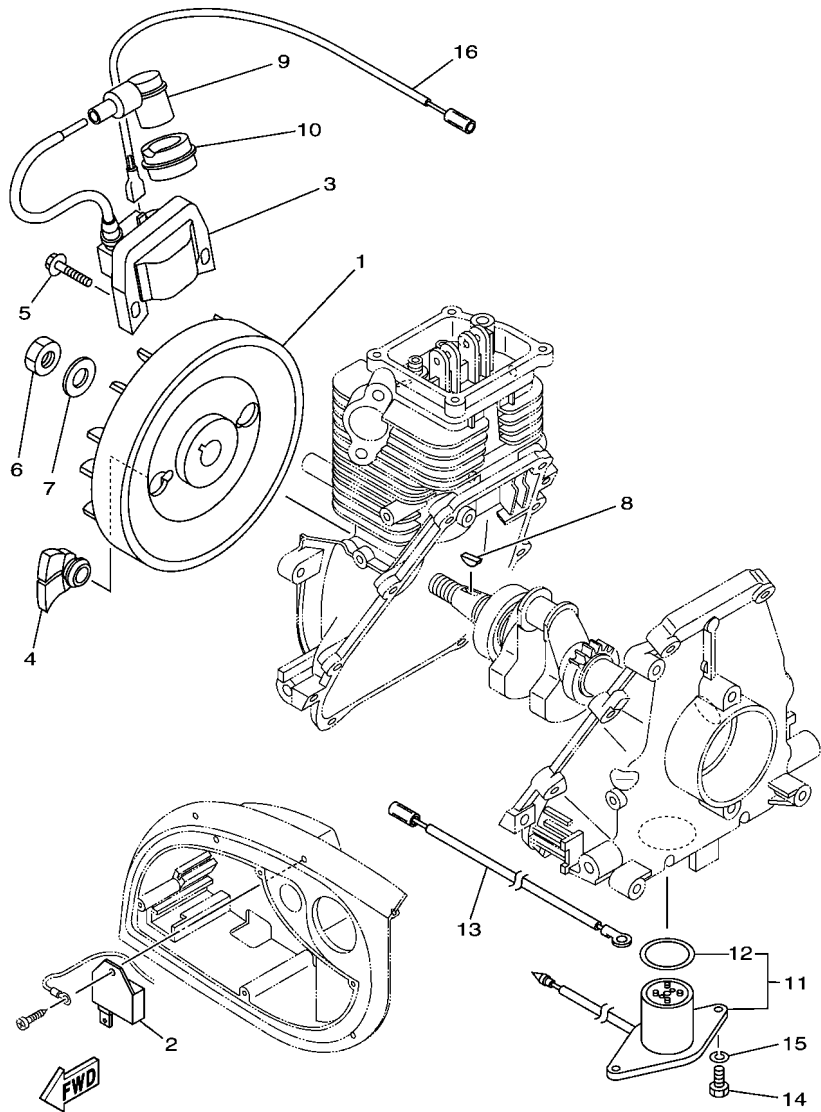
REF. NO.	PART NO.	DESCRIPTION	7CG3				REMARKS
1	7CG-228B0-00	COVER ASSY 2	1				
2	7VV-23364-00	.COLLAR 2	3				
3	7CG-22878-00	.SEAL 6	1				
4	7VV-22879-00	.SEAL, 7	1				
5	7CG-22885-00	.SEAL 8	1				
6	7CG-22897-00	.SEAL 14	1				
7	7VV-22896-00	.SEAL 13	1				
8	90183-05061	NUT, SPRING	1				
9	7CG-23119-00	SCREW	5				
10	98507-05012	SCREW, PAN HEAD	3				
11	92907-05600	WASHER, PLATE	3				
12	7VV-228D0-00	COVER ASSY 4	1				
13	7VV-22877-00	.SEAL, 5	1				
14	90149-06223	SCREW	1				
15	7VV-228E0-00	COVER ASSY 5	1				
16	7VV-22889-00	.SEAL 12	1				
17	98507-05012	SCREW, PAN HEAD	4				
18	92907-05600	WASHER, PLATE	4				



7CG3700-S110

FIG. 11 FUEL TANK

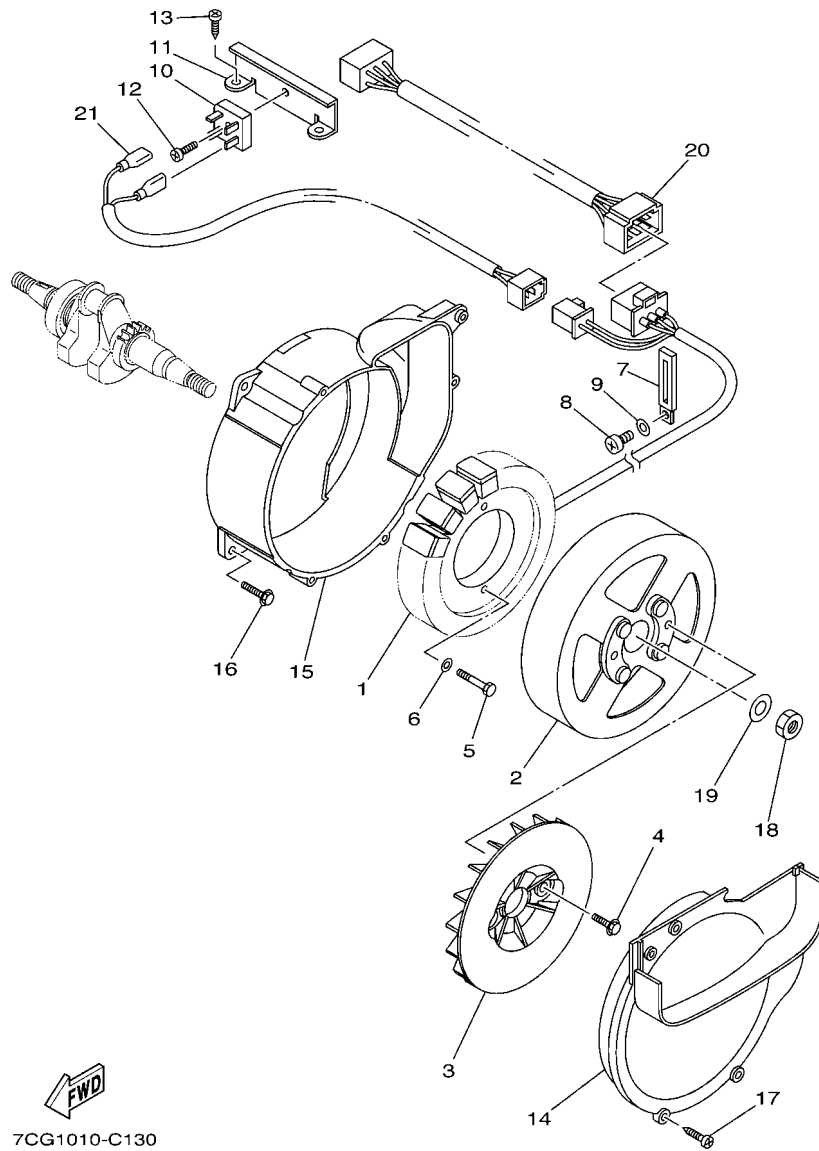
REF. NO.	PART NO.	DESCRIPTION	7CG3				REMARKS
1	7CG-24110-11	FUEL TANK COMP.	1				
2	7CG-24610-01	CAP ASSY	1				
3	7CG-24167-00	STRAINER	1				
4	7VV-24181-00	DAMPER, LOCATING 1	2				
5	7VV-24410-01	FUEL PUMP ASSY	1				
6	95807-06014	BOLT, FLANGE	2				
7	7VV-2419A-00	HOLDER	1				
8	7VV-24311-20	PIPE, FUEL 1	1				
9	7VV-24312-20	PIPE 2	1				
10	7VV-24313-20	PIPE 3	1				
11	7VV-24314-01	PIPE 4	1				
12	7VV-24575-00	LEVER, FUEL CHANGE	1				
13	7VV-48300-00	REMOCON. CABLE ASSY.	1				
14	7CG-24500-01	FUEL COCK ASSY 1	1				
15	7VV-24524-00	.LEVER, COCK	1				
16	3H3-2452K-00	.O-RING	1				
17	7VV-24544-00	BRACKET, FUEL COCK	1				
18	98507-05012	SCREW, PAN HEAD	1				
19	92907-05600	WASHER, PLATE	1				
20	95307-05700	NUT	1				
21	90183-05076	NUT, SPRING	1				
22	7VV-24545-00	SPACER, FUEL COCK	1				
23	7CG-24533-D0	SEAL, COCK	1				
24	5BM-24514-00	NET, FILTER 1	1				
25	90467-10008	CLIP	3				
26	90467-09103	CLIP	2				
27	90467-12052	CLIP	2				



7CG1010-C122

FIG. 12 MAGNETO

REF. NO.	PART NO.	DESCRIPTION	7CG3				REMARKS
1	7VV-85650-01	ROTOR ASSY	1				
2	7VV-85640-00	T.C.I. UNIT ASSY	1				
3	7CG-82310-00	IGNITION COIL ASSY	1				
4	7CG-82176-00	DAMPER	2				
5	90105-05005	BOLT, FLANGE	2				
6	95307-10600	NUT	1				
7	92907-10600	WASHER, PLATE	1				
8	90280-03045	KEY, WOODRUFF	1				
9	7VU-82370-00	PLUG CAP ASSY	1				
10	7VV-82372-00	SEAL, PLUG CAP	1				
11	7VV-85720-01	OIL LEVEL GAUGE ASSY	1				
12	93210-27370	.O-RING	1				
13	7CG-82519-C0	WIRE, EARTH LEAD	1				
14	97007-06014	BOLT	2				
15	92907-06100	WASHER, SPRING	2				
16	7CG-85515-C0	LEAD WIRE ASSY	1				



7CG1010-C130

FIG. 13 GENERATOR

REF. NO.	PART NO.	DESCRIPTION	7CG3				REMARKS
1	7VV-87150-21	STATOR ASSY	1				
2	7VV-87160-01	ROTOR ASSY	1				
3	7VV-87172-00	FAN, GENERATOR	1				
4	95807-06012	BOLT, FLANGE	2				
5	97027-06025	BOLT, HEXAGON	2				
6	92907-06600	WASHER, PLATE	2				
7	90462-06007	CLAMP	1				
8	98507-05010	SCREW, PAN HEAD	1				
9	92907-05600	WASHER, PLATE	1				
10	7VU-87105-00	RECTIFIER ASSY 1	1				
11	7VV-8711E-00	STAY, RECTIFIER	1				
12	98507-05014	SCREW, PAN HEAD	1				
13	97707-60512	SCREW, TAPPING	2				
14	7CG-87174-00	COVER, REAR END	1				
15	7VV-8718K-01	COVER, FRONT	1				
16	90105-05361	BOLT, FLANGE	3				
17	97707-50016	SCREW, TRUSS HEAD TAPPING	4				
18	95317-10600	NUT	1				
19	92907-10600	WASHER, PLATE	1				
20	7CG-8A531-C2	WIRE COMPLETE 1	1				
21	7CG-8A532-C0	WIRE COMPLETE 2	1				

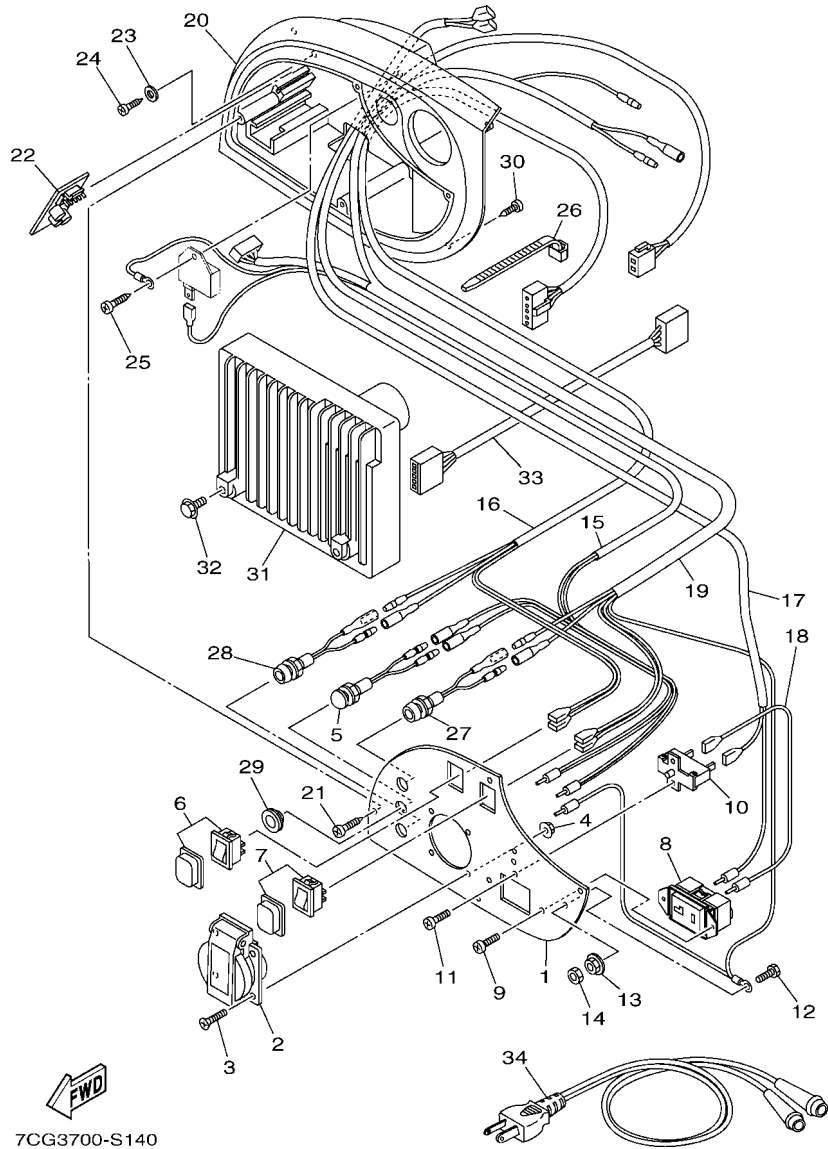


FIG. 14 CONTROL BOX

REF. NO.	PART NO.	DESCRIPTION	7CG3				REMARKS
1	7CG-87249-N1	PLATE	1				
2	7CK-87221-90	RECEPTACLE 1 (S230E-7-4)	1				KEDU
3	90151-03032	SCREW, COUNTERSUNK	4				
4	90179-03478	NUT	4				
5	7NJ-83530-G0	PILOT LIGHT ASSY	1				
6	7XX-82550-01	ENGINE STOP SWITCH ASSY	1				
7	7CG-82550-C1	ENGINE STOP SWITCH ASSY	1				
8	7H8-87214-11	RECEPTACLE COMP. (WCZ 1220-125	1				PANASONIC
9	98507-04008	SCREW, PAN HEAD	2				
10	7VV-82181-00	CIRCUIT BREAKER COMP. (8A)	1				HOSIDEN
11	98507-03008	SCREW, PAN HEAD	2				
12	97080-05014	BOLT	1				
13	95707-05500	NUT, FLANGE	1				
14	95380-05700	NUT	1				
15	7CG-8722W-N1	WIRE, LEAD 6	1				
16	7CG-8722X-41	WIRE, LEAD 5	1				
17	7CG-87224-N2	WIRE, LEAD 2	1				
18	7VV-87223-N0	WIRE, LEAD 1	1				
19	7CG-82507-91	WIRE, LEAD	1				
20	7VV-87213-00	COVER, CONTROL BOX	1				
21	97707-40512	SCREW, TAPPING	4				
22	7CG-85680-C0	SPEED LIMITER ASSY	1				
23	90201-03013	WASHER, PLATE	1				
24	97707-30512	SCREW, TAPPING	1				
25	97707-40512	SCREW, TAPPING	1				
26	7CG-87229-00	BAND	1				
27	7CH-83582-C1	PILOT LIGHT ASSY	1				

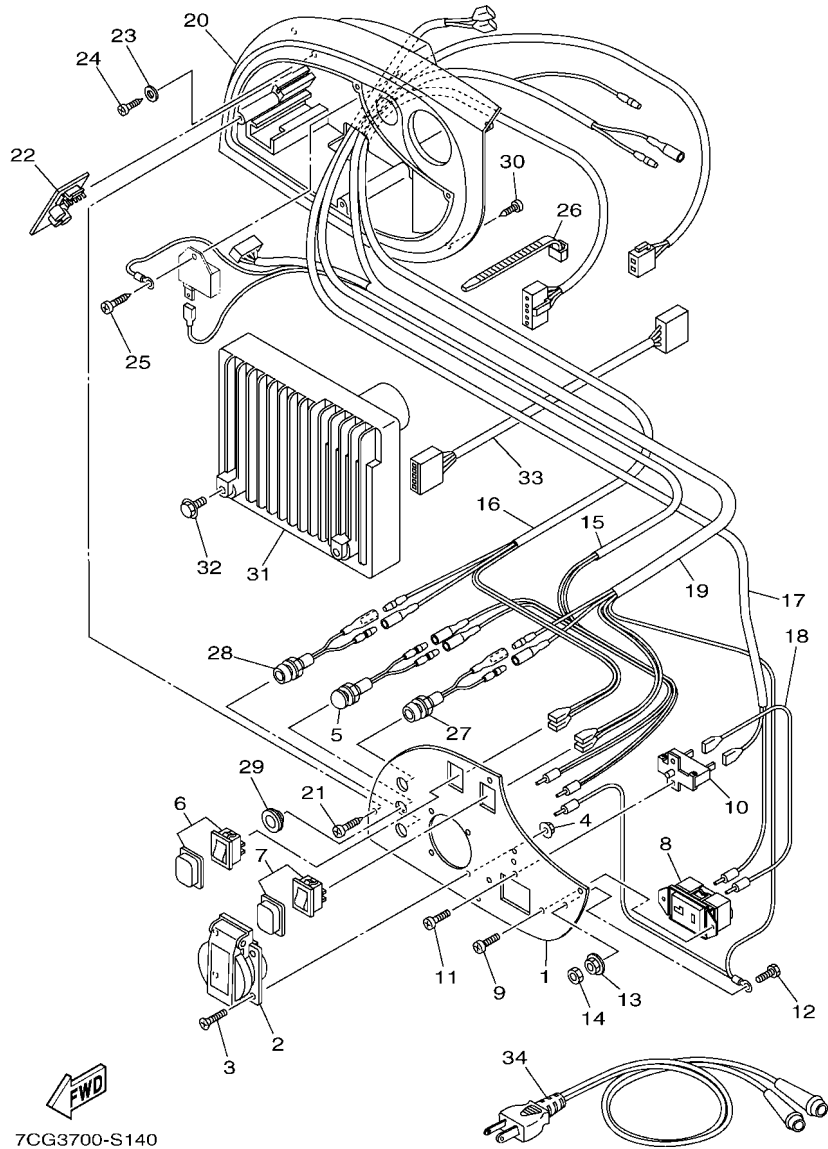


FIG. 14 CONTROL BOX

REF. NO.	PART NO.	DESCRIPTION	7CG3				REMARKS
28	7CH-83582-C1	PILOT LIGHT ASSY	1				
29	90480-13012	GROMMET	1				
30	97707-50016	SCREW, TRUSS HEAD TAPPING	4				
31	7CG-8A210-24	CONTROL UNIT	1				
32	95807-06012	BOLT, FLANGE	2				
33	7VV-82509-00	WIRE, SUB LEAD	1				
34	7CG-87209-N0	CHARGE CORD ASSY	1				

NUMERICAL INDEX

PART NO.	REF. NO.	PART NO.	REF. NO.	PART NO.	REF. NO.	PART NO.	REF. NO.	PART NO.	REF. NO.	PART NO.	REF. NO.
7CG-11011-00	9 - 6	127-14198-00	6 - 22	7CG-22881-01	9 - 1	7VV-82181-00	14 - 10	90149-06223	10 - 14	95607-06615	8 - 3
7CG-11012-00	9 - 7	73A-14212-00	6 - 6	7CG-22885-00	10 - 5	7CG-82310-00	12 - 3	90151-03032	14 - 3	95707-05500	14 - 13
J38-11116-00	8 - 5		6 - 23	7VV-22886-00	9 - 20	7VU-82370-00	12 - 9	90153-05024	7 - 6	95707-06500	5 - 14
7VV-11166-01	1 - 5	1HX-1423E-23-A0	6 - 21	7VV-22887-00	9 - 21	7VV-82372-00	12 - 10	90170-05302	3 - 13		9 - 5
7VV-11190-00	1 - 2	7VU-14293-00	6 - 11	7VV-22889-00	10 - 16	7CG-82507-91	14 - 19	90179-03478	14 - 4	95807-06012	13 - 4
7VV-11193-00	1 - 3	7VV-14411-00	5 - 5	7VV-22891-D0	9 - 4	7VV-82509-00	14 - 33	90183-05061	9 - 17		14 - 32
7VV-11400-00	2 - 1	7VV-14412-00	5 - 6	7VV-22895-00	9 - 10	7CG-82519-C0	12 - 13		10 - 8	95807-06014	11 - 6
7VV-11610-00	2 - 5	7X9-14416-10	5 - 4	7VV-22896-00	10 - 7	7XX-82550-01	14 - 6	90183-05076	9 - 2	95817-06008	9 - 8
7VV-11631-00	2 - 4	7VV-14451-00	5 - 7	7CG-22897-00	10 - 6	7CG-82550-C1	14 - 7		11 - 21	95817-06012	9 - 9
2E9-11633-00	2 - 6	7VV-14453-00	5 - 10	7CG-228A0-00	9 - 12	7NJ-83530-G0	14 - 5	90201-03013	14 - 23	95827-06012	7 - 9
7VV-11650-01	2 - 2	7VV-14462-00	5 - 8	7CG-228B0-00	10 - 1	7CH-83582-C1	14 - 27	90280-03045	12 - 8	97007-06014	12 - 14
7VV-11654-00	2 - 3	7VV-14485-01	5 - 11	7VV-228C0-00	9 - 19		14 - 28	90387-05624	3 - 7	97027-06025	13 - 5
7CG-12111-00	3 - 3	7RH-14486-00	6 - 2	7VV-228D0-00	10 - 12	7CG-85515-C0	12 - 16	90387-05679	4 - 10	97080-05014	14 - 12
7VV-12117-00	3 - 9	7VV-14613-00	7 - 8	7VV-228E0-00	10 - 15	7VV-85640-00	12 - 2	90413-05015	6 - 28	97707-30512	14 - 24
1HX-12119-00	3 - 15	7VV-1469A-00	4 - 2	7CG-23119-00	9 - 18	7VV-85650-01	12 - 1	90462-06007	13 - 7	97707-40014	11 - 28
7CG-12121-01	3 - 4	7VV-1469E-00	4 - 3		10 - 9	7CG-85680-C0	14 - 22	90467-09103	11 - 26	97707-40512	14 - 21
7CG-12141-C0	3 - 5	7VV-1469F-00	4 - 4	7VV-23364-00	10 - 2	7VV-85720-01	12 - 11	90467-10008	11 - 25		14 - 25
7VV-12151-00	3 - 10	7CG-14721-10	7 - 1	7VV-23383-00	9 - 16	7VU-87105-00	13 - 10	90467-12052	11 - 27	97707-50016	4 - 7
7VV-12154-00	3 - 14	7VV-14786-00	7 - 2	7CG-24110-11	11 - 1	7VV-8711E-00	13 - 11	90467-13064	5 - 13		4 - 19
7VV-12159-00	3 - 12	7NJ-14788-00	7 - 4	7VV-24156-00	15 - 4	7VV-87150-21	13 - 1	90467-280A0	5 - 12		13 - 17
7VV-12170-02	3 - 1	7VV-1478A-00	4 - 12	7VV-24161-10	15 - 1	7VV-87160-01	13 - 2	90480-13012	14 - 29		14 - 30
7VV-12287-01	3 - 2	7VV-1478E-00	4 - 13	7VV-24161-30	15 - 3	7VV-87172-00	13 - 3	90501-16708	3 - 8	97707-50114	4 - 31
7VV-12486-00	4 - 18	7VV-1478F-00	4 - 14	7CG-24162-10	15 - 2	7CG-87174-00	13 - 14	92907-05600	10 - 11	97707-60512	13 - 13
7VV-12620-00	4 - 1	7NJ-14799-01	7 - 3	7CG-24167-00	11 - 3	7VV-8718K-01	13 - 15		10 - 18	98507-03008	14 - 11
7VV-12650-00	4 - 11	7NJ-1479E-00	7 - 5	7VV-24181-00	11 - 4	7CG-87209-N0	14 - 34		11 - 19	98507-04008	14 - 9
7VV-12668-00	4 - 5	1WG-14922-00	6 - 24	7VV-2419A-00	11 - 7	7VV-87213-00	14 - 20		11 - 30	98507-05008	6 - 14
7VV-12669-00	4 - 16	7VV-1495E-2C	6 - 18	7VV-24311-20	11 - 8	7H8-87214-11	14 - 8		13 - 9	98507-05010	13 - 8
7VV-12678-00	4 - 6	7VV-15111-02	8 - 1	7VV-24312-20	11 - 9	7CK-87221-90	14 - 2	92907-06100	12 - 15	98507-05012	6 - 33
7VV-12679-00	4 - 15	7VV-15121-00	8 - 8	7VV-24313-20	11 - 10	7VV-87223-N0	14 - 18	92907-06600	13 - 6		10 - 10
7VV-13556-00	5 - 3	7X9-15363-00	8 - 12	7VV-24314-01	11 - 11	7CG-87224-N2	14 - 17	92907-10600	12 - 7		10 - 17
7G5-13556-10	5 - 2	7VV-15407-00	8 - 6	7VV-24410-01	11 - 5	7CG-87229-00	14 - 26		13 - 19		11 - 18
7X9-13595-00	5 - 1	7VV-15710-00	4 - 20	4SV-24453-00	6 - 13	7CG-8722W-N1	14 - 15	92990-04100	6 - 17		11 - 29
7CG-14101-02	6 - 1	7VV-15713-00	4 - 21	7CG-24500-01	11 - 14	7CG-8722X-41	14 - 16	92990-05100	6 - 15	98507-05014	13 - 12
22F-14117-00	6 - 7	7VV-15714-00	4 - 22	5BM-24514-00	11 - 24	7CG-87249-N1	14 - 1		6 - 34	98580-04010	6 - 16
127-14134-00	6 - 3	7VV-15715-00	4 - 23	7VV-24524-00	11 - 15	7CG-8A210-24	14 - 31	93102-20008	8 - 2	98907-05014	4 - 9
7VV-14137-00	6 - 29	7VV-15716-00	4 - 24	3H3-2452K-00	11 - 16	7CG-8A531-C2	13 - 20	93102-20366	8 - 10	99530-08012	8 - 7
3LD-14139-00	6 - 32	7VV-15741-00	4 - 25	7CG-24533-D0	11 - 23	7CG-8A532-C0	13 - 21	93210-15414	8 - 13		
8A7-14139-00	6 - 31	7VV-15751-00	4 - 27	7VV-24544-00	11 - 17	7CY-E4997-00	6 - 8	93210-27370	12 - 12		
620-14142-32-A0	6 - 10	7VV-15755-00	4 - 28	7VV-24545-00	11 - 22	90105-05002	4 - 8	93306-00415	8 - 9		
7VV-14150-00	6 - 25	7VV-15788-00	4 - 29	7VV-24575-00	11 - 12		4 - 17	93450-11120	2 - 7		
7CG-14162-00	6 - 19	7VV-15793-00	4 - 26	7CG-24610-01	11 - 2		4 - 30	93604-42002	3 - 11		
7CG-14181-00	6 - 4	7CG-21696-10	15 - 5	7DK-24877-00	15 - 6		5 - 9	93605-30002	3 - 6		
7X9-14185-00	6 - 9	7VV-22825-01	9 - 13	7VV-26331-00	5 - 15		9 - 11	94702-00419	1 - 1		
22F-14186-00	6 - 20	7CG-22875-00	9 - 14	7VV-28100-00	9 - 22	90105-05005	12 - 5	95307-05700	11 - 20		
7E1-14191-00	6 - 5	7CG-22876-00	9 - 15	7VV-48300-00	11 - 13	90105-05006	8 - 11	95307-06600	7 - 7		
1V3-14196-00	6 - 26	7VV-22877-00	10 - 13	7VV-67617-00	9 - 3	90105-05361	1 - 4	95307-10600	12 - 6		
7VV-14196-01	6 - 30	7CG-22878-00	10 - 3	7CF-81802-09	6 - 12		13 - 16	95317-10600	13 - 18		
7VV-14197-00	6 - 27	7VV-22879-00	10 - 4	7CG-82176-00	12 - 4	90116-06033	8 - 4	95380-05700	14 - 14		